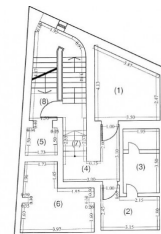
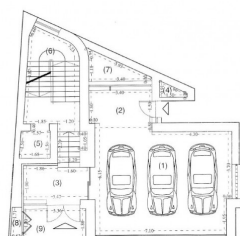


**GARA DE NORD - Office building Ug+Gf+3**  
500sqm

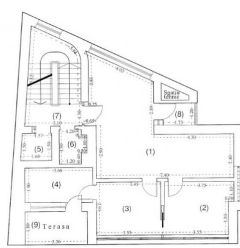
**800,000 €**



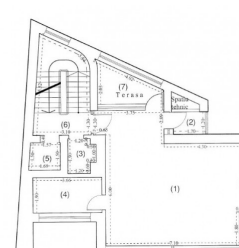
No. cat.	Destinatie suprafata	Suprafata
1	Comertul intern	17.24
2	Vestibul	6.23
3	Corp central	6.93
4	Pod	2.20
5	Coridor lift	2.41
6	Scara intern	13.72
7	Pod cu scara	2.50
8	Pod cu scara	13.61
Total suprafata utila		<b>68.78</b>



No. cat.	Destinatie suprafata	Suprafata
1	Spatiu comercial	4.58
2	Pod	6.89
3	Pod	6.52
4	Coridor intern	6.84
5	Pod	7.44
6	Coridor lift	13.05
7	Pod intern	3.46
8	Pod cu scara	4.07
Total suprafata utila		<b>79.87</b>
Alteia parcare		1.71
Total		<b>81.58</b>



No. cat.	Destinatie suprafata	Suprafata
1	Pod	10.60
2	Blind	10.33
3	Blind	10.02
4	Incalzire	6.96
5	Lift	2.25
6	WC	2.28
7	Pod cu scara	13.56
8	Pod	3.04
Total suprafata utila		<b>70.09</b>
Alteia		6.20
Total		<b>85.84</b>



No. cat.	Destinatie suprafata	Suprafata
1	Blind	10.64
2	Oficina	2.64
3	Pod	2.28
4	Oficina	6.70
5	Coridor lift	2.64
6	Pod cu scara	13.70
Total suprafata utila		<b>34.60</b>
Alteia		6.20
Total		<b>40.80</b>

**GENERAL INFORMATION**

- 7 rooms
- level: floor
- Demisol+Parter+1+2+3 / 1S+P+3E
- construction year: 2013

**AREAS**

- built: 500 sqm
- usable: 353 sqm

**CONTAINS**

- bedrooms
- - bathrooms

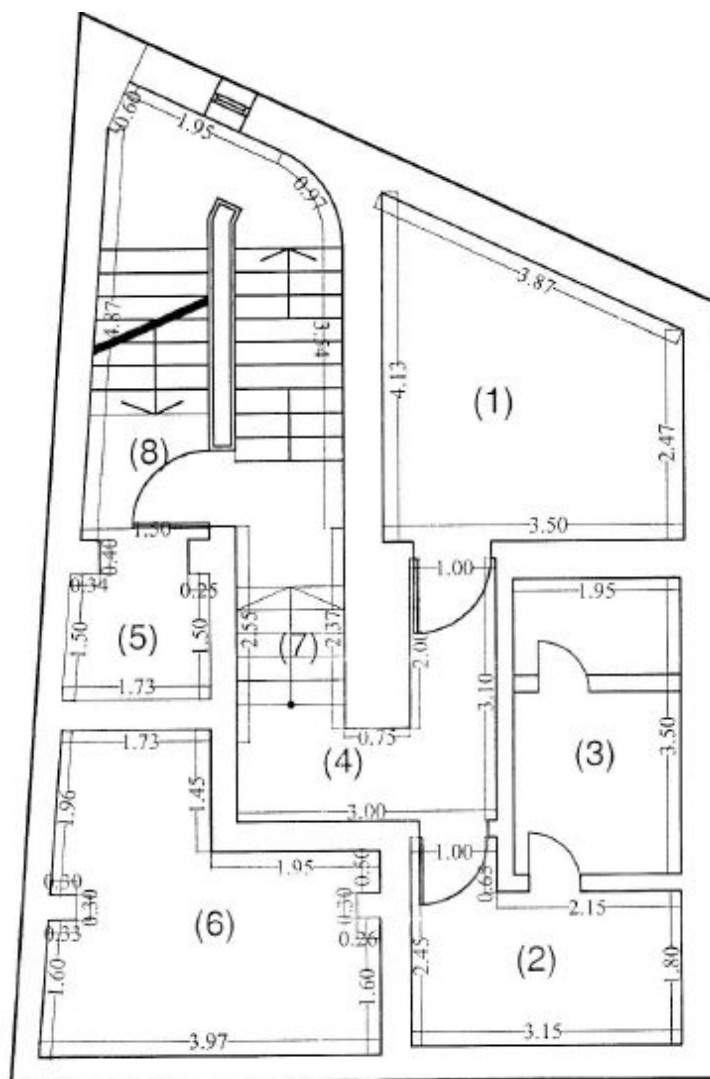
**Utilities**

logo on building, separate metering, sanitation, elevator maintenance and repairs

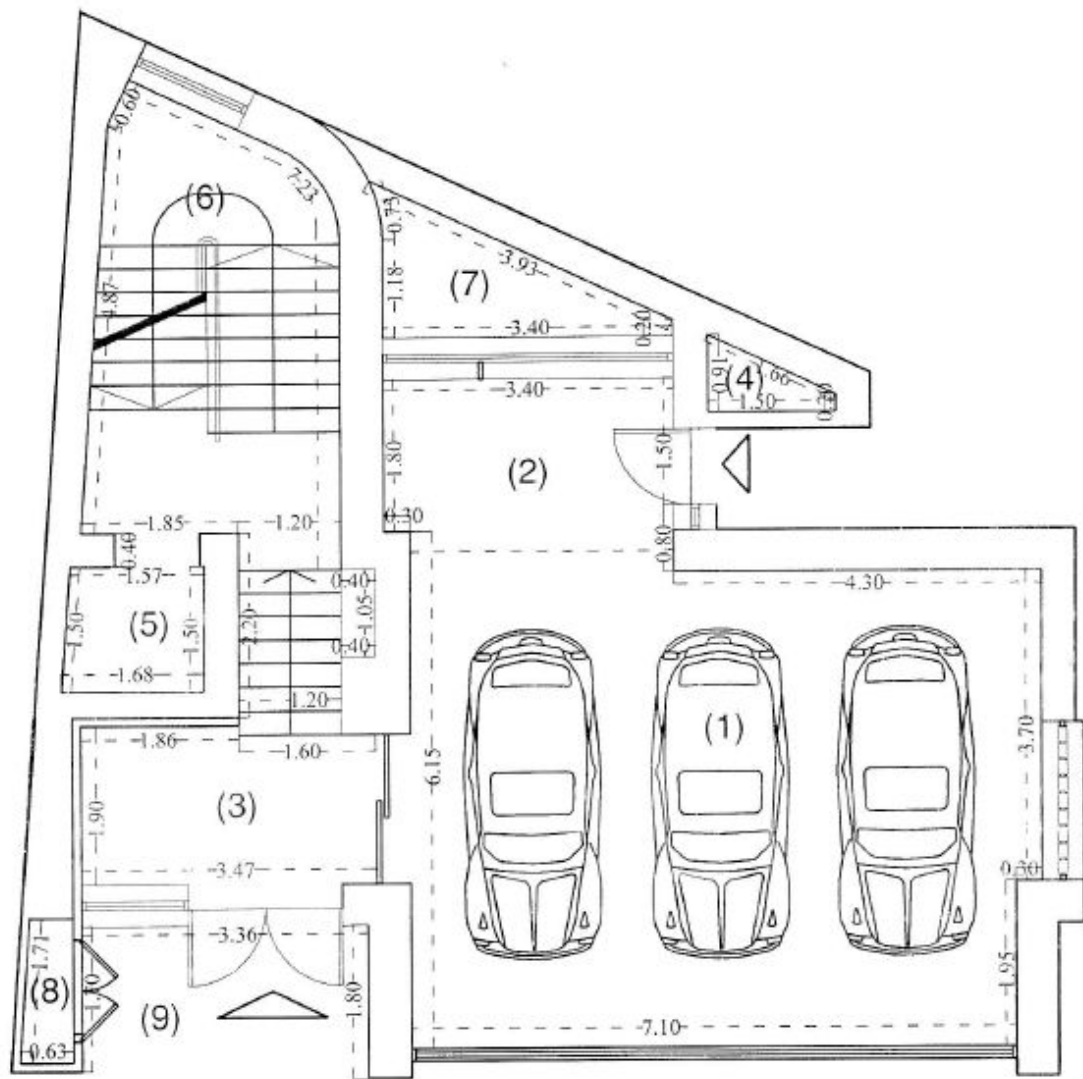
**Property details**

Located in Gara de Nord area, a few minutes walk from the metro station and Matache Square, this office building is disposed on 5 levels Ug+Gf+3. The built area is 500sqm of which 353sqm usable. The floors have an area between 60sqm and 85sqm and can be divided according to needs. Each floor is served by a central heating and air conditioning system and has an elevator for 6 people. It's suitable for medical center/offices.

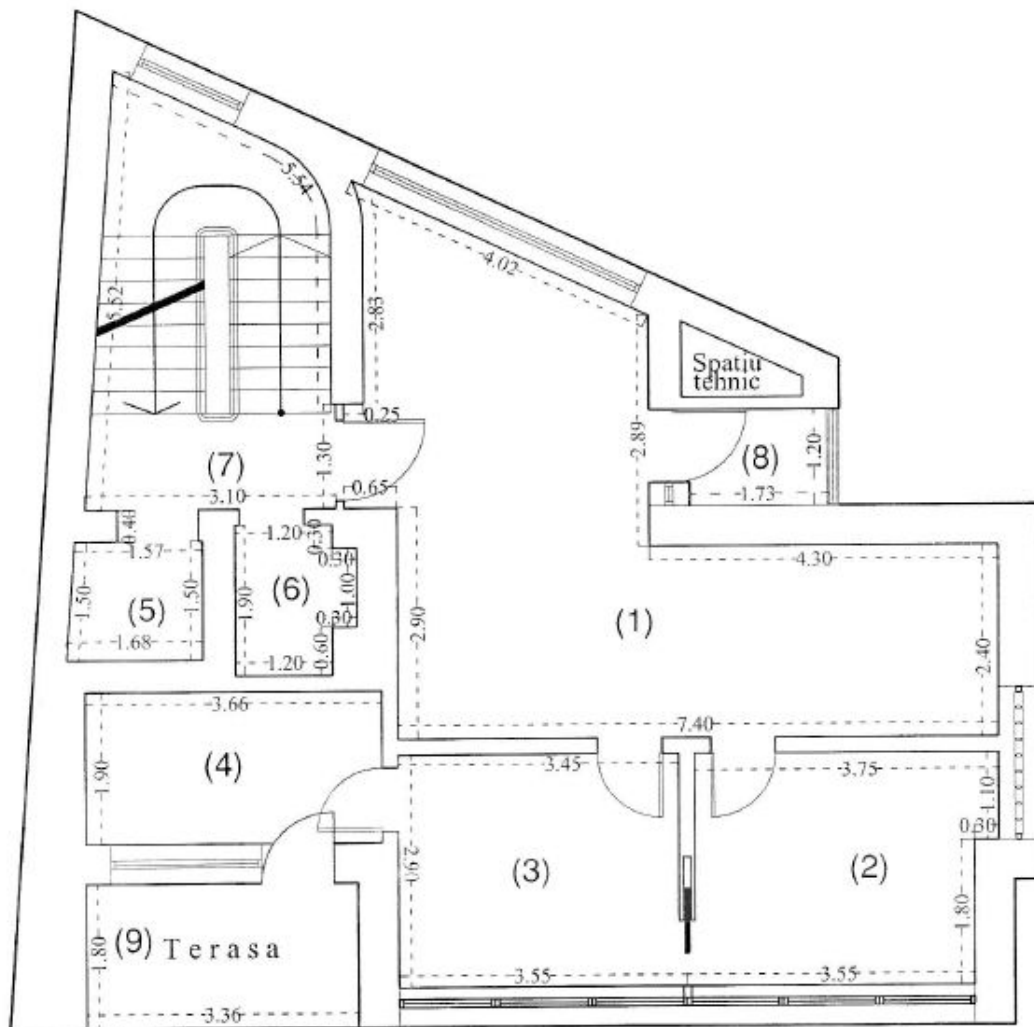
<https://ww.goldenkey.ro/en/property-office-building-ug-gf-3-500sqm-near-gara-de-nord-metro-station-cp2013199>



Recapitulatie		
Nr.crt.	Destinația suprafeței	sup(mp)
1.	Centrala termica	11.54
2.	Vestiar	6.32
3.	Grup sanitar	6.83
4.	Hol	5.30
5.	Gol lift	2.44
6.	Subsol tehnic	11.72
7.	Hol cu scari	2.98
8.	Hol cu scari	13.63
Total suprafata utila		<b>60.76</b>



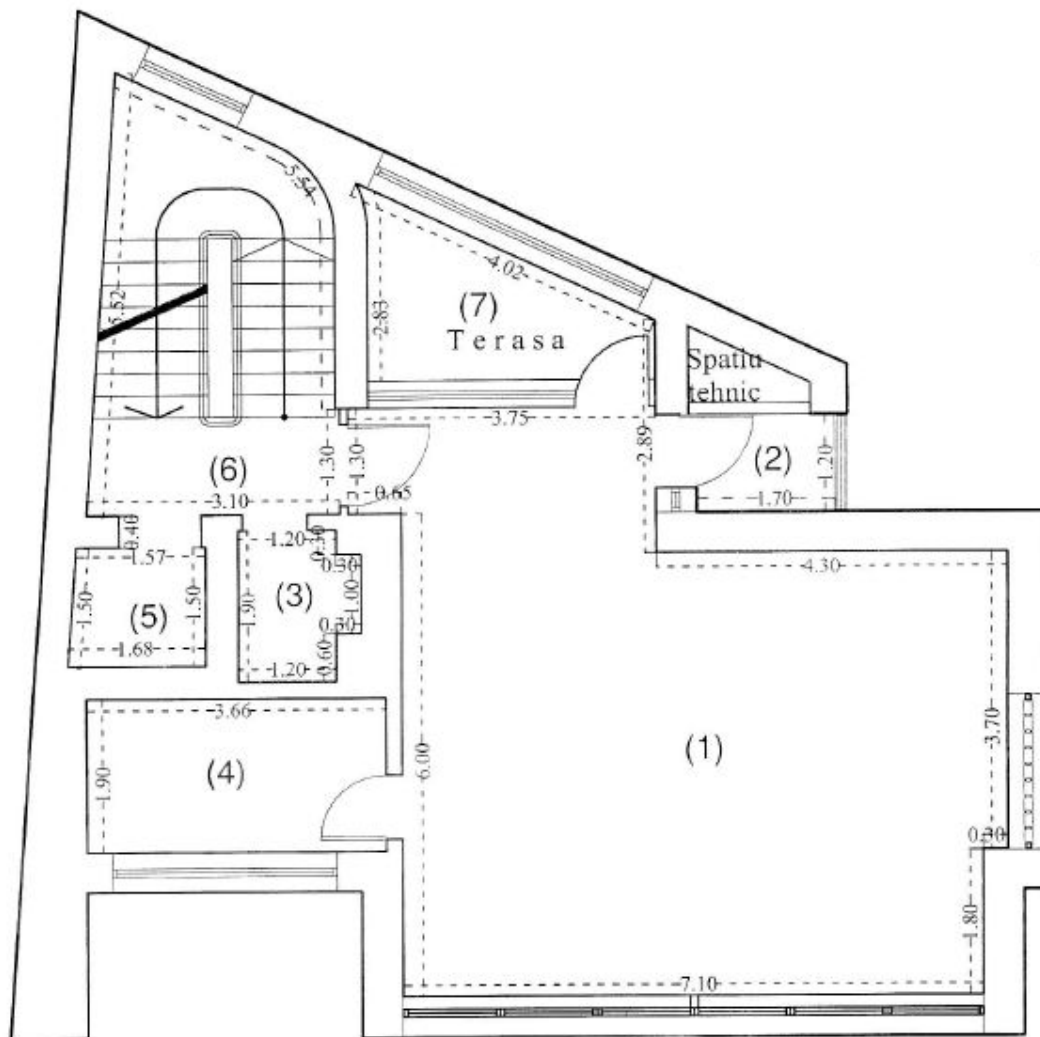
Recapitulatie		
Nr.crt.	Destinația suprafeței	sup(mp)
1.	Spatiu parcare	42.08
2.	Hol	6.89
3.	Hol	6.54
4.	Gol tehnic	0.84
5.	Gol lift	2.44
6.	Hol cu scari	13.85
7.	Gol tehnic	3.46
8.	Firida gaze	0.97
Total suprafata utila		<b>77.07</b>
9.	Acces pietonal	5.71
Total		<b>82.78</b>



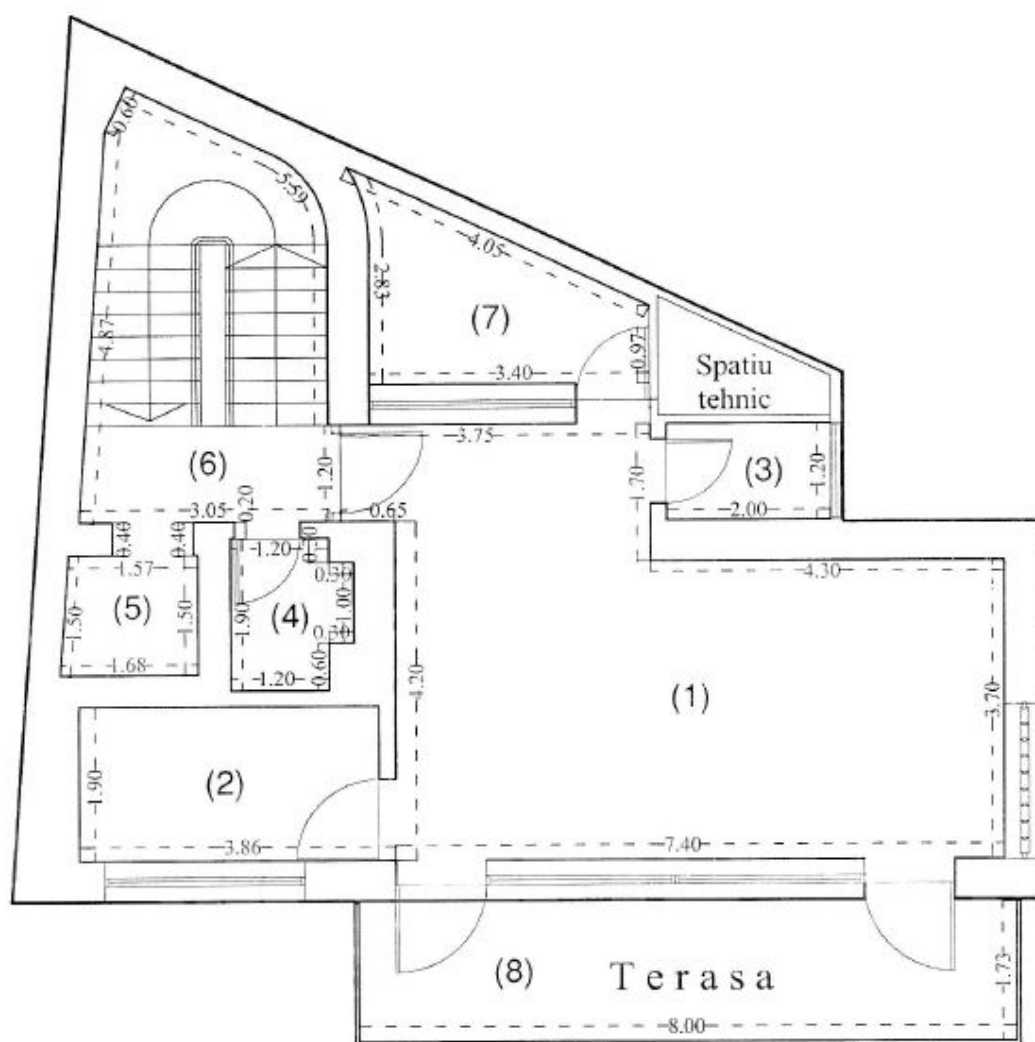
Recapitulatie		
Nr.crt.	Destinația suprafeței	sup(mp)
1.	Hol	30.66
2.	Birou	10.33
3.	Birou	10.02
4.	Incapere	6.96
5.	Lift	2.44
6.	Wc	2.58
7.	Hol cu scari	13.96
8.	Oficiu	2.04
Total suprafata utila		<b>78.99</b>
9.	Terasa	6.05
Total		<b>85.04</b>

**GoldenKey Premium Real Estate** | Bringing you home... since 2006

73 Aron Cotrus St., Bucharest 1 | Phone: +4 021 795 00 95 | Email: office@goldenkey.ro  
[www.goldenkey.ro](http://www.goldenkey.ro) | [www.herastraupark.ro](http://www.herastraupark.ro) | [www.gdk.properties](http://www.gdk.properties)



Recapitulatie		
Nr.crt.	Destinația suprafeței	sup(mp)
1.	Birou	46.64
2.	Oficiu	2.04
3.	We	2.58
4.	Oficiu	6.96
5.	Gol lift	2.44
6.	Hol cu scari	13.96
Total suprafata utila		<b>74.62</b>
7.	Terasa	5.53
Total		<b>80.15</b>



Recapitulatie		
Nr.crt.	Destinația suprafeței	sup(mp)
1.	Birou	33.73
2.	Oficiu	6.95
3.	Oficiu	2.40
4.	Wc	2.58
5.	Gol lift	2.44
6.	Hol cu scari	13.91
Total suprafata utila		<b>62.01</b>
7.	Terasa	5.53
8.	Terasa	14.00
Total		<b>81.54</b>