

IANCU NICOLAE - Elegant 4 bedrooms villa with 1480sqm  
landplot  
ID:9689

**7,500 € / lună**  
**1,250,000 €**



#### **GENERAL INFORMATION**

- 8 rooms
- level: 1S+P+1E+M
- construction year: 2006

#### **AREAS**

- built: 850 sqm
- usable: 750 sqm

#### **CONTAINS**

- 4 bedrooms
- 5 bathrooms

#### **Utilities**

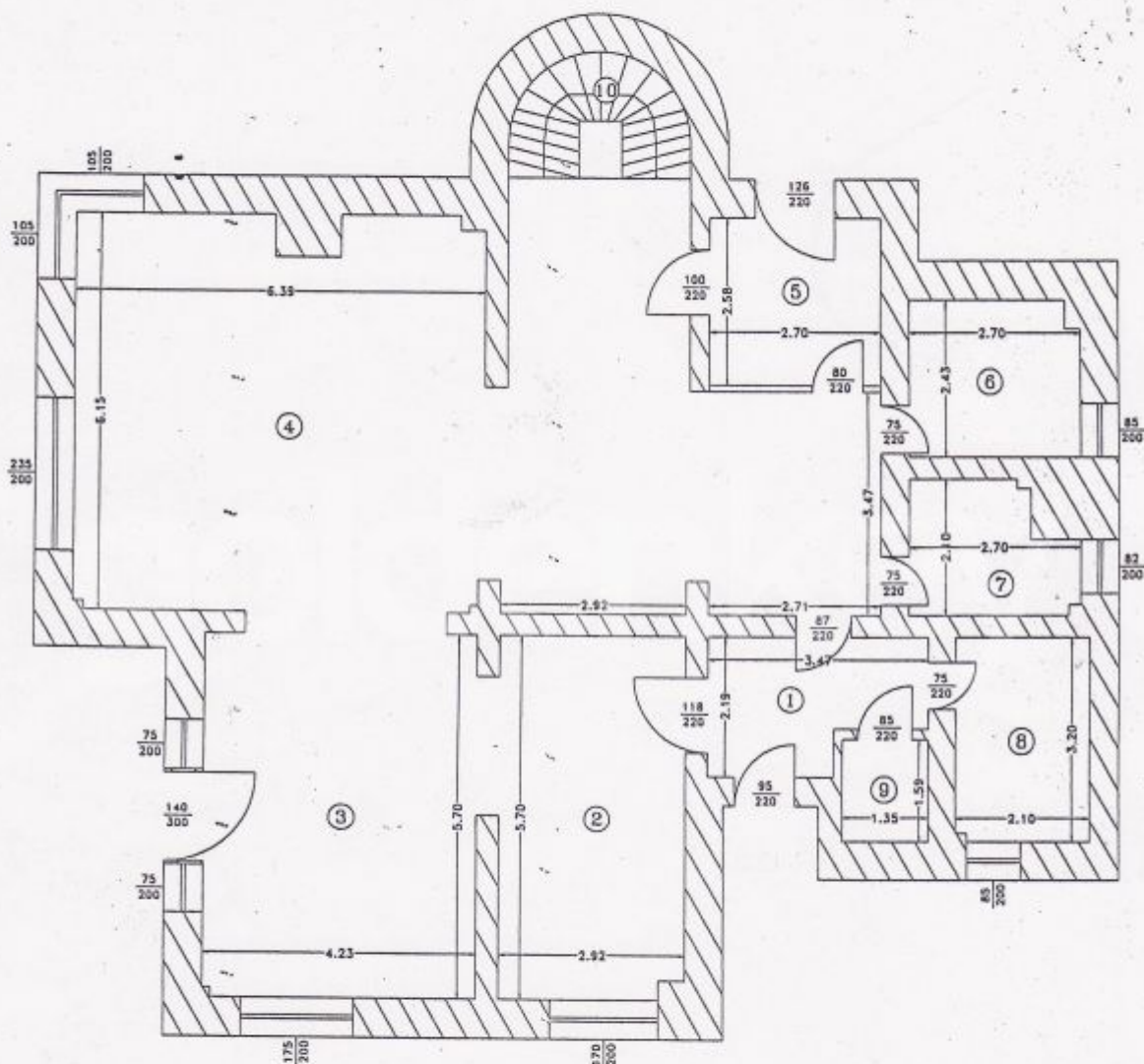
air conditioning, shower, bathtub, fridge, kitchen hood, dishwasher, staircase, unfurnished, radiators, central heating, closed kitchen, furnished kitchen, water meters, heating meter, yard, private garden, sauna, service closet, barbeque area

#### **Property details**

Elegant Bs+Gf+1+at villa, located on quiet street with direct access towards Iancu Nicolae Blvd, close to Baneasa Forest, surrounded by an impressive garden and private pool. It was built on a land plot of 1480sqm and it has an usable area of 750sqm. The Gf it is composed of living room with fire place, dining area, 2 kitchens, guest toilet, technical room and access towards the basement where there is indoor pool and 3 storage rooms. The 1st floor has 3 bedrooms with en-suite bathrooms and dressing. The Attic it is a generous 120sqm open space with bathroom. Due to the offered comfort and great location, it is recommended for a family.

<https://www.goldenkey.ro/en/property-elegant-4-bedrooms-villa-with-1480sqm-landplot-cp9689>

RELEVEU PARTER  
(intravilan)  
SCARA 1:100



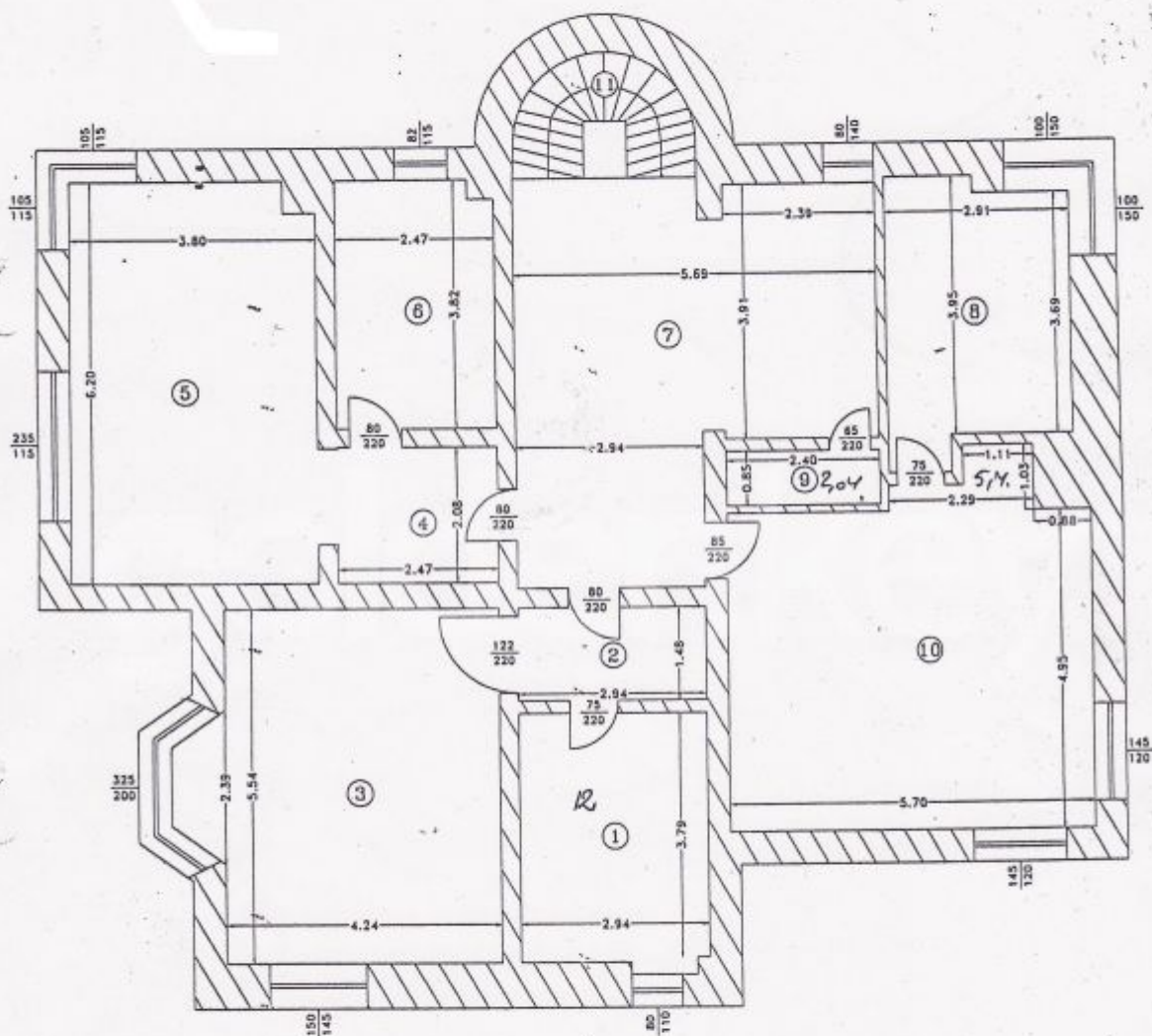
RECAPITULATIE

Nr. crt.	Destinatia incaperii	Suprafata (mp)
1.	HOL	6,50
2.	BUCATARIE	16,52
3.	CAMERA	24,09
4.	CAMERA	69,20
5.	HOL	6,97
6.	CAMERA	6,45
7.	W.C.	4,87
8.	BAIE	6,70
9.	DEBARA	2,15
10.	SCARA	4,84
SUPRAFATA TOTALA		148,29

Numele si prenumele executantului: S.C. EUROLAND S.R.L.  
Autorizat: ing. Mija Liviu Ioan

OFICIUL DE CADASTRU SI PUBLICITATE  
IMOBILIARA ILFOV

RELEVEU ETAJ  
(intravilan)  
SCARA 1:100



RECAPITULATIE

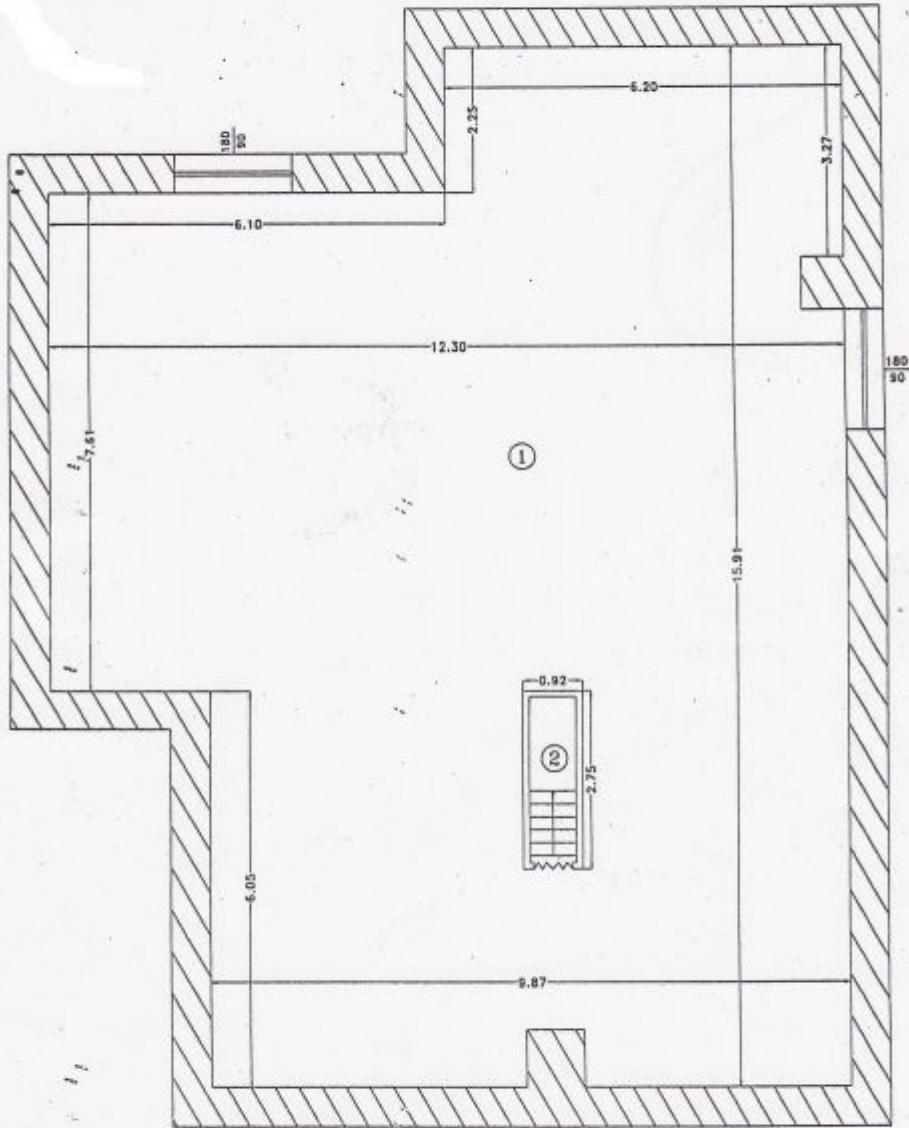
Nr. art.	Destinatia Incaperii	Suprafata (mp)
1.	BAIE	11.54
2.	SAS	4.35
3.	CAMERA	24.95
4.	SAS	5.14
5.	CAMERA	23.31
6.	BAIE	9.29
7.	HOL	29.01
8.	BAIE	11.70
9.	DEBARA	2.04
10.	CAMERA	29.83
11.	SCARA	4.24
SUPRAFATA TOTALA		155.40



Numele si prenumele executantului: S.C. EUROLAND S.R.L.  
Autorizat: ing. Miha Liviu Ioan

OFICIUL DE CADASTRU SI PUBLICITATE  
IMOBILIARA ILFOV

RELEVEU MANSARDA  
(intravilan)  
SCARA 1:100



RECAPITULATIE

Nr. crt.	Destinatia Incaperii	Suprafata (mp)
1.	CAMERA	164.12
2.	SCARA	1.84
SUPRAFATA TOTALA		165.96



Numele si prenumele executantului: S.C. EUROLAND S.R.L.

OFICIUL DE CADASTRU SI PUBLICITATE  
IMOBILIARA ILFOV