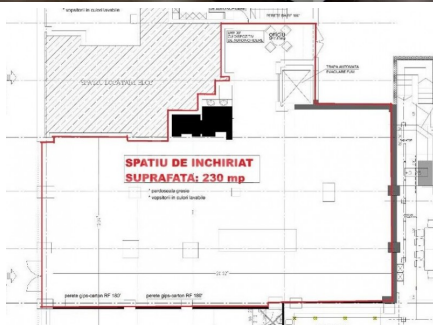
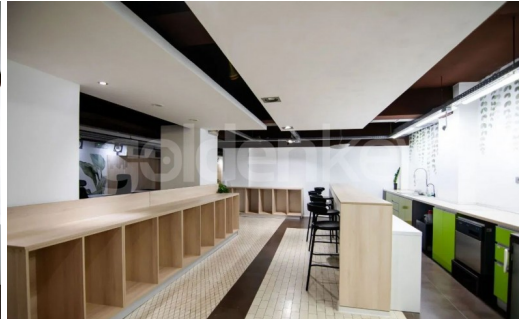


CLUCERULUI - 230sqm commercial space  
near the park

**5,500 € / lună**



### **GENERAL INFORMATION**

- 1 rooms
- level: floor Parter / 1S+P+7E
- construction year: 1980

### **AREAS**

- built: 250 sqm
- usable: 230 sqm

### **CONTAINS**

- bedrooms
- 1 bathrooms

### **Utilities**

trafic intens, bloc de apart., vitrina 10 m, water, sewage, electricity, gas, utilities in the area

### **Property details**

Located in the Kiseleff area, a few minutes from the Arch of Triumph, this commercial space is located on the ground floor of a building D+GF+7. It has a total area of 250sqm, of which 230sqm is usable. It is composed of open space and 2 bathrooms, this versatile configuration allows optimal arrangement, regardless of the specifics of the activity. Considering the area with intense pedestrian traffic, banks, Mega Image, pharmacies, restaurants and cafes, it is suitable for any kind of activity.

<https://www.goldenkey.ro/en/property-230sqm-commercial-space-near-the-park-cp3054294>

